



KIM HENG MARINE & OILFIELD PTE LTD

(A Subsidiary of Kim Heng Limited)

48 Penjuru Road, Singapore 609152 / 9 Pandan Crescent, Singapore
128465

Tel: +65 6777 9990 / +65 6773 9610 Fax: +65 6778 9990 / +65 6779 0552

Website: www.kimheng.com.sg / Email: enquiry@kimheng.com.sg

YOUR RELIABLE SOURCE FOR RIG MOBILISATION & REACTIVATION

We serve as the Coordinator between the oil majors and drilling contractors



We are based in Singapore to provide one stop field support with operational & technical experience throughout Asia Pacific in support of procurement and expediting of equipment to rig at offshore location.

Voyage repair & maintenance in all kinds of engineering, steelwork fabrication & modification, installation & removal of thrusters, anchor chain inspection, etc.

OUR WATERFRONT & YARD FACILITIES

Pandan Shipyard



Land Area: 34,125m²
Waterfront: 137m

Yard Facilities

- Combined 205m water front
- 10 x 280T crawler crane
- 550T floating crane
- Fleet of 40+ tugs and barges
- Slipway
- NC cutting machine
- NC bending machine

Penjuru Shipyard



Land Area: 19,512m²
Waterfront: 68m

- Max Length: 120m (LOA)
- Max Breadth: 20m
- Max Draft: 7.0m at zero tide

OUR VESSEL & EQUIPMENT



9	21	6	4
AHT & AHTS	Barges	Tugs	OSV

22	3	15
Crawler Crane	Prime Mover	Trailers

MARINE AND PORT AGENCY SERVICES



- Port and Customs Clearance
- Immigration, Visas, Work Pass Exemption
- Crew Management – Meet and Greet, Travel and Hotel booking, Crew Welfare
- Pilotage and Harbour Tugs – Vessel escort and safety tugs



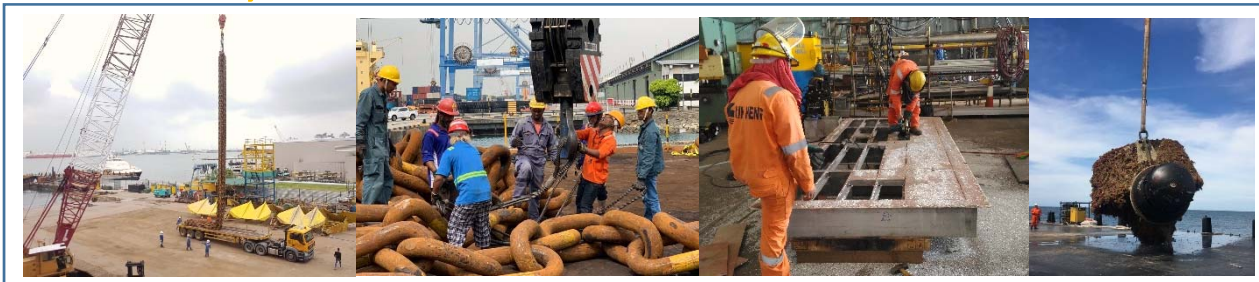
- Bunker and Fresh Water Supply at all berths
- Stevedoring
- Riding Crews

SUPPLY CHAIN MANAGEMENT



- Procurement in Supplying Oilfield Parts, Offshore Containers, Bunkering Fuel, Drill Pipe, Collars, Casing and Downhole Tools.
- Inventory Management
- Warehousing / Consolidation / Indoor/ Outdoor storage
- Land Logistics and Transportation - including temperature controlled transport
- Freight Forwarding Services

RIG REPAIRS, MAINTENANCE AND YARD SUPPORT



- Rig stacking and Preservation (Warm / Cold)
- Offshore Afloat Repair and Maintenance for Incoming Rigs/ Vessels
- Inspection / Fabrication / Installation / Removal / Engineering Services

MARINE SALVAGE & OIL SPILL RESPONSE 24/7



- Maintain own diving gears and equipment (Hyperbaric chamber & ROV –KIV)
- Underwater Maintenance
- Class Approved Survey (UWILD & IWS)
- Oil Spill Management (IMO Tier 1 to IMO Tier 3 Certified)

SHIPPING AGENCY TRACK RECORD



**COBALT EXPLORER
(TURKISH PETROLEUM)**

With Covid-19 regulatory compliance

- 69 pax of Crew Change in Singapore
- Meet and greet services
- Travel and hotel arrangement
- Visa and work pass exemption application
- Port & Customs clearances
- Port Harbour Towage& Pilotage
- Bunker Supply
- Procurement / Freight forwarding
- Logistics & Transport



**PV DRILLING V
(PETRO VIETNAM)**

With Covid-19 regulatory compliance

- 85 pax of Crew Change in Singapore
- Meet and greet services
- Travel and hotel arrangement
- Visa and work pass exemption application
- Port & Customs clearances
- Port Harbour Towage& Pilotage
- Bunker Supply
- Procurement / Freight forwarding
- Logistics & Transport



SAPURA T 17

- Crew Change / Immigration clearances
- Meet and greet services
- Travel and hotel arrangement
- Visa and work pass exemption application
- Port & Customs clearances
- Port Harbour Towage& Pilotage
- Procurement / Engineering / Fabrication Services
- Bunker Supply



**NOBLE CLYDE BOUDREAUX
(NOBLE)**

- Crew Change / Immigration
- Procurement / Engineering / Fabrication Services
- Assembly and Installation of Flare Booms
- Provision of Spacer Barges
- Preparation of Halliburton Skip & Ship
- Anchor Chain Removal & Inspection/ Thrusters Removal & Installation
- Bunker Supply

SHIPPING AGENCY TRACK RECORD



**NOBLE BULLY II
(NOBLE)**

- Crew Change / Immigration
- Procurement / Engineering / Fabrication Services
- Provision of Spacer Barges
- Bunker Supply
- Modular Fabrication / Assembly
- Hull Cleaning
- Annual LSA FFE Inspection
- Stacking services



**COSL BOSS
(COSL DRILLING)**

- Crew Management
- Procurement & Logistics Support



**DISCOVERER SEVEN SEAS
(TRANSOCEAN)**

- Crew Change / Immigration
- Procurement / Engineering / Fabrication Services
- Assembly and Installation of Flare Booms
- Provision of Spacer Barges
- Preparation of Halliburton Skip & Ship
- Anchor Chain Removal & Inspection/ Thrusters Removal & Installation



**CONSTELLATION 1
(TRANSOCEAN)**

- Crew Change / Immigration
- Procurement / Engineering / Fabrication Services
- Assembly and Installation of Flare Booms
- Provision of Spacer Barges
- Preparation of Halliburton Skip & Ship
- Anchor Chain Removal & Inspection/ Thrusters Removal & Installation

SHIPPING AGENCY TRACK RECORD – NOBLE’S RIG



NOBLE JOE KNIGHT



NOBLE MICK O'BRIEN



NOBLE JOHNNY WHITSTINE



NOBLE REGINA ALLEN



NOBLE HOUSTON COLBERT

- Crew Change in Singapore
- Meet and greet services
- Travel and hotel arrangement
- Visa and work pass exemption application
- Port & Customs clearances
- Port Harbour Towage & Pilotage
- Bunker Supply
- Logistics / Transport
- Procurement / Engineering / Fabrication Services



NOBLE DAVE BEARD

- Crew Change / Immigration
- Bunker Supply
- Logistics & Transport
- Port & Customs clearances
- Port Harbour Towage & Pilotage
- Stacking services

SHIPPING AGENCY TRACK RECORD



**DEEPWATER MILLENNIUM
(TRANSOCEAN)**

- Marine and Port Agency Services
- Procurement / Engineering / Fabrication Services
- Transfer of Brine via 250ft ballastable barge
- Transfer of Barite & Cement via bulk tanks
- Removal & Dismantling of Thrusters Prior Entry to Shipyard
- Assembling & Installation of Thrusters after Shipyard Repairs
- Hull Cleaning
- Anchor Chain Removal & Inspection
- Lifting of BOP & LMRP



**DEEPWATER CHAMPION
(TRANSOCEAN)**

- Charter of 70 pax Crew Boat For Crew / Cargo Transfer between Singapore and OPL
- Crew Change / Immigration
- Procurement / Engineering / Fabrication Services
- Transfer of Brine via 250ft ballastable barge
- Transfer of Barite & Cement via bulk tanks



**DEEPWATER FRONTIER
(TRANSOCEAN)**

- Charter of Crew Boat for Crew / Cargo Transfer Between Singapore and OPL
- Charter of 150pax accommodation barge
- Crew Change / Immigration
- Procurement / Engineering / Fabrication Services
- Transfer of Brine via 250ft ballastable barge
- Transfer of Barite & Cement via bulk tanks
- Removal of BOP and Crane booms (2 units)
- Removal & Installation of Thrusters
- Crew Management
- Risers Maintenances

SHIPPING AGENCY TRACK RECORD



**FPSO DALIA
(TOTAL)**

- Heli Crew Change
- 120 On Signers
- 90 Off Signers
- Charter of Supply Vessel for cargo transfer
- Charter Of 70pax Crew Boat for Crew / Cargo Transfer Between Singapore and OPL
- Crew Change / Immigration
- Procurement
- Engineering & Fabrication



**FPSO AKPO
(TOTAL)**

- Heli Crew Change in Singapore
- 120 On Signers
- 90 Off Signers
- Charter of Supply Vessel for Cargo Transfer
- Charter of 70pax Crew Boat For Crew / Cargo Transfer Between Singapore and OPL
- Crew Change / Immigration
- Procurement
- Engineering & Fabrication



**FPSO CLOV
(TOTAL)**

- Heli Crew Change in Singapore
- 120 On Signers
- 90 Off Signers
- Charter of Supply Vessel for Cargo Transfer Between Singapore And OPL
- Crew Change / Immigration
- Procurement
- Engineering & Fabrication

SHIPPING AGENCY TRACK RECORD



**SEVAN LOUISIANA
(SEVAN MARINE)**

- Charter of Chopper in Taipei & Singapore for Crew / Cargo Transfer
- Charter of Supply Vessel For cargo transfer
- Charter of Crew Boat for Crew / Cargo Transfer Between Singapore and OPL
- Crew Change / Immigration
- Procurement / Engineering / Fabrication Services



**SEVAN DRILLER
(SEVAN MARINE)**

- Mobilization
- Crew Management / Immigration
- Procurement/Logistics Support
- General Agency Services
- Provision of Harbour Vessel



**ENERGY SEARCHER
(NORTHERN OFFSHORE)**

- Afloat Repair ; Side Shell Repair
- Renewal of damaged Anchor Rack
- Repair of damaged Helideck
- Repair of Bridge Wing
- Crew Management / General Agency Services
- Procurement / Engineering / Fabrication Services



**FPSO CLOV
(TOTAL)**

- Heli Crew Change in Singapore
- 120 On Signers ; 90 Off Signers
- Charter of Supply Vessel for
- Cargo Transfer Between Singapore and OPL
- Crew Change / Immigration
- Procurement, Engineering & Fabrication

SHIPPING AGENCY TRACK RECORD



**SONGA MERCUR
(SONGA OPUS)**

- Modification of Anchor Pipe Rack
- Procurement & Logistics Support
- Crew Management



**MAERSK CONVINCER
(MAERSK DRILLING)**

- Crew Management
- Procurement & Logistics Support
- Provision of Harbour Vessels / Barges



**AD 60
(ARABIAN DRILLING)**

- Crew Change / Immigration clearances
- Meet and greet services
- Travel and hotel arrangement
- Visa and work pass exemption application
- Port & Customs clearances
- Port Harbour Towage & Pilotage
- Procurement / Engineering / Fabrication Services
- Bunker Supply



**RANDOLPH YOST
(SHELF DRILLING)**

- Tank Cleaning & Painting
- Berthing @ Kim Heng Yard
- Crew Management
- General Agency Services
- Engineering Fabrication
- Procurement & Logistics Support
- Provision of Harbour Vessel

SHIPPING AGENCY TRACK RECORD



**WEST CASTOR
(SEADRILL)**

- Crew Management
- Seafastening
- Procurement/Logistics Support
- General Agency Services



**WEST TRITON
(SEADRILL)**

- Crew Management
- 5 year survey – Spud Scan Cleaning Project



**WEST JANUS
(SEADRILL)**

- Seafastening
- Installation of Anchor Rack
- Crew Management
- Supply of Welding Set & Scaffolding Material



**WEST TUCANA
(SEADRILL)**

- Seafastening
- Installation of Anchor Rack
- Crew Management

SHIPPING AGENCY TRACK RECORD

- | | | | |
|-----------------------------|--------------------------|-------------------------|----------------|
| • Asian Offshore Drilling 1 | • KAN TAN IV | • Offshore Resolute | • West Leo |
| • Cobalt Explorer | • Maersk Interpid | • Petro Rig III | • West Linus |
| • COSL Power | • Maersk Completer | • Parameswara | • West Leda |
| • COSL Seeker | • Maersk Deliverer | • PV Drilling | • West Larissa |
| • COSL Boss | • Maersk Convincer | • I, II, III, IV, V, VI | • West Orion |
| • Compact Driller | • Maersk Ngujima – Yin | • Salvigiant | • West Triton |
| • Deepwater Champion | • Maersk Reacher | • Sapura T17 | |
| • Deepwater Expedition | • Maersk Discoverer | • Sapura T9 | |
| • Deepwater Frontier | • Maersk Viking | • Sapura T10 | |
| • Deepwater Millennium | • Murmanskaya | • SKD T2,11,15 & 16 | |
| • Energy Driller | • Neptune Explorer | • Trident 9 | |
| • Energy Searcher | • Noble Bully I & II | • Trident 15 | |
| • Ensco 102-109 | • Noble Clyde Boudreaux | • Trident 16 | |
| • Ensco 51-57 | • Noble Globetrotter II | • Transocean Legend | |
| • Ensco 67,7500,84,94,95 | • Noble Duchess | • Transocean Honor | |
| • Ensco 8500-8506 | • Noble Don Taylor | • West Callistor | |
| • Galveston Key | • Noble Dave Beard | • West Juno | |
| • Helix 534 | • Noble Joe Knight | • West Menang | |
| • High Island XI | • Noble Johnny Whitstine | • West Alliance | |
| • Hibiscus | • Noble Phoenix | • West Ariel | |
| • Jack Bates | • Offshore Courageous | • West Atlas | |
| | • Offshore Defender | • West Berani | |

CONTACT DETAILS

Key Executives

Mr. Thomas Tan

Chief Executive Officer

Email: thomas.tan@kimheng.com.sg

Mobile: +65 9819 2225

Ms. Lilian Yeo

Chief Operating Officer

Email: liliany@kimheng.com.sg

Mobile: +65 9670 8120

Address

Pandan Yard: No. 9 Pandan Crescent, Singapore 128465

Tel: +65 6773 9610 Fax: +65 6779 0552

Penjuru Yard: No. 48 Penjuru Road, Singapore 609152

Tel: +65 6777 9990 Fax: +65 6778 9990

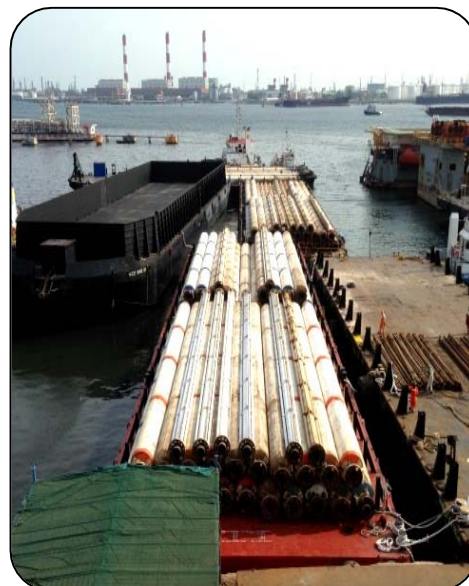
www.kimheng.com.sg

Riser Maintenance & Refurbishment Drillship “Deepwater Frontier”

In 2011, Kim Heng was contracted to carry out maintenance and refurbishment of 90ft length risers for Transocean Drillship “Deepwater Frontier”.

Kim Heng provided the full spectrum of services:

- Full project management from concept to delivery.
- Site surveys and situation analysis to ensure best solution and services at all time
- Marine transportation by tugs & barges from Anchorage to Yard.
- Inspection, blasting, refurbishment and painting works.
- Installation of Buoyancy Modules
- Marine transportation by tugs & barges to rigs at offshore location.



Anchor Chain Removal & Inspection Services Midwater Semi-Submersible "GSF Rig 140"



Kim Heng Crane Barge & Cargo Barge alongside for the Removal of Anchor Chain.



Inspection, Refurbishment, Maintenance and Hydro-Jetting of Anchors and Anchor Chain at Kim Heng Waterfront



◀ Fabrication of 12 units of 40ton Buoyancy.



Spooling of 3" Chain into AHT ▶



Anchor Chain Inspection Services Semi-Submersible “Noble Max Smith”



Inspection of Anchor Chain at Kim Heng Waterfront



Refurbishment, Maintenance and Hydro-Jetting of Anchor Chain

Thruster Removal & Installation Semi-Submersible “Sevan Louisiana ”

Six Generation New Built semi Submersible - Sevan Louisiana stopover in Singapore for mobilization loadout and commissioning of equipment in transit to Gulf of Mexico.

A fully rig-up SL6000 Crane Barge (Kim Heng 55) and rigging team were mobilized to anchorage to carry out the removal and installation of thruster..

Kim Heng provide the full range of offshore service and support as follows:

- Thruster removal & Installation, Heavy Lifting, Sea fastening
- Logistics Supply Base Support
- Marine Spread of Vessels
- Manpower Supply for Painting job
- Procurement & Equipment Rental
- Onshore & Offshore Crew Management
- Office space for Onshore Team
- VIP Transport Arrangement



Thruster Removal & Installation Drillship “Deepwater Millennium”



Mobilization of Kim Heng 55 Crane Barge and equipment alongside.



Lifting of Thruster units and loading on Kim Heng 55 Crane Barge



Preliminary Inspection. Removal of barnacles / marine growth from Thruster units

Thruster Removal & Installation Drillship “Deepwater Frontier”

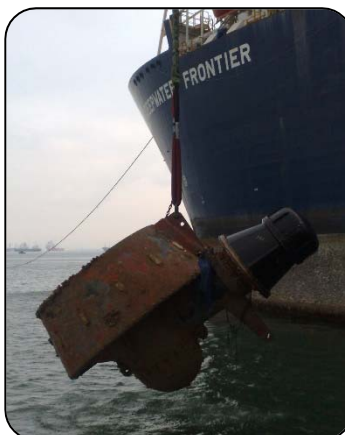
In order to provide the 10 years old drillship a further 5 years of operational integrity, the existing 6 unit of azimuth thrusters have to be replaced with another 6 fully rebuilt thrusters.

Transocean – Deepwater Frontier awarded this task of thrusters’ removal and re-installation to Kim Heng Marine & Oilfield Pte Ltd

A fully rig-up SL6000 crane-barge (Kim Heng 55) with a 10ton forklift and 20 crews were mobilized to anchorage to commence the job/task.

Kim Heng provide a full range of offshore service and support including

- Offshore Repair
- Equipment Removal / Installation
- Heavy Lifting
- Salvage



Thruster Removal & Installation Semi-Submersible “Transocean Legend”



Mobilization of Crane Barge and equipment alongside.



Lifting of Thruster Unit



Removal of barnacles / marine growth from Thruster units

Overhaul of Seawater Check Valves



Receipt and Inspection of Valves Condition



Hydro-jetting and Sandblasting of Valves in Kim Heng Yard



Assembly and Completion

Pipe Racks Fabrication/ Installation of Piping, Blasting painting for “Shapoorji FPSO”



Fabrication in workshop



Yard Erection/ Assembly



Lifting of pipe racks from yard after completion



Heavy Lift of Flare Tip Package to Derrick Top Ultra Deepwater Drillship “Deepwater Proteus”

Kim Heng was engaged by Transocean to provide Engineering solutions for provision of “Kim Heng 55” crane barge to install the Flare Tip Package on the Derrick top of Deepwater Proteus at an outreach of about 50 mtrs at 110 mtrs above water level.



Planning & Mobilisation



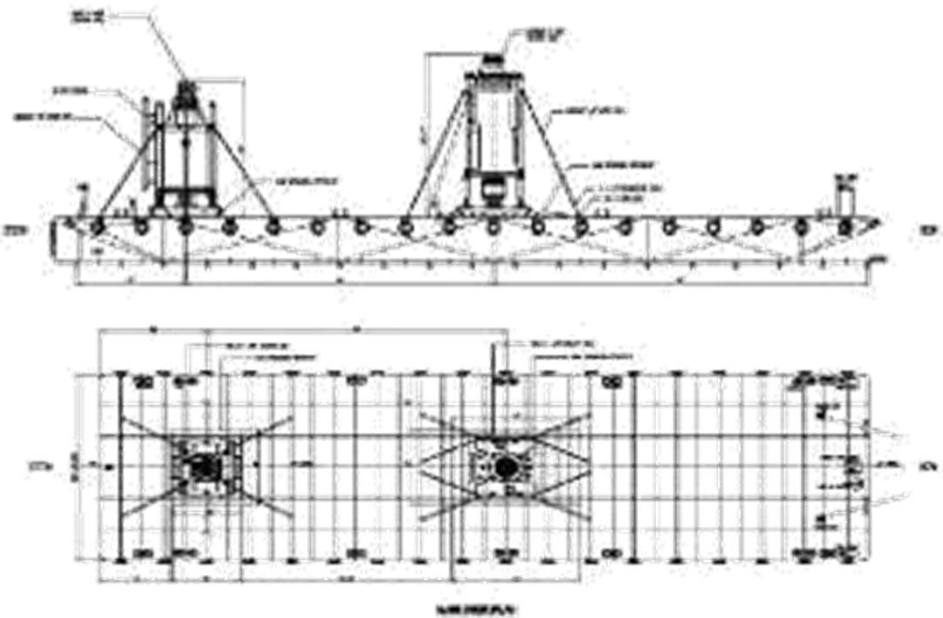
Execution



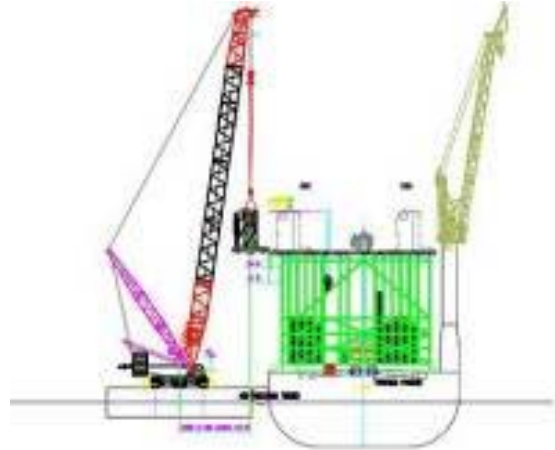
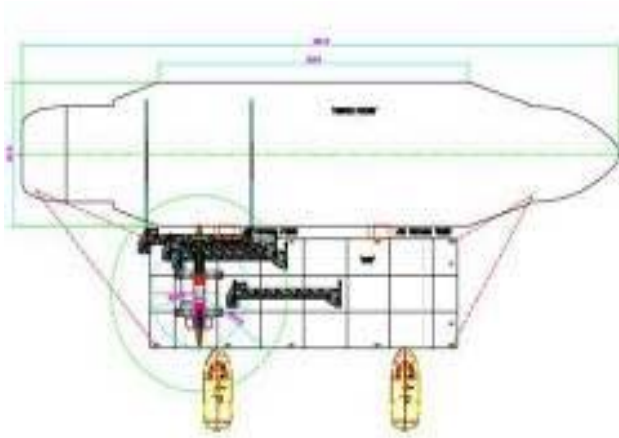
Assembly and Completion

Heavy Lift of BOP & LMRP Stack Drillship “Noble Bully 2”

We provide detailed engineering for mooring arrangement & lifting procedure for transportation of 425 ton BOP stack & 210 ton LMRP assembly using our ballast-able barge “Kim Heng 1888”.



Heavy Lift of Gantry Crane Drillship “Noble Phoenix”



Lifting Calculation and Layout Plan



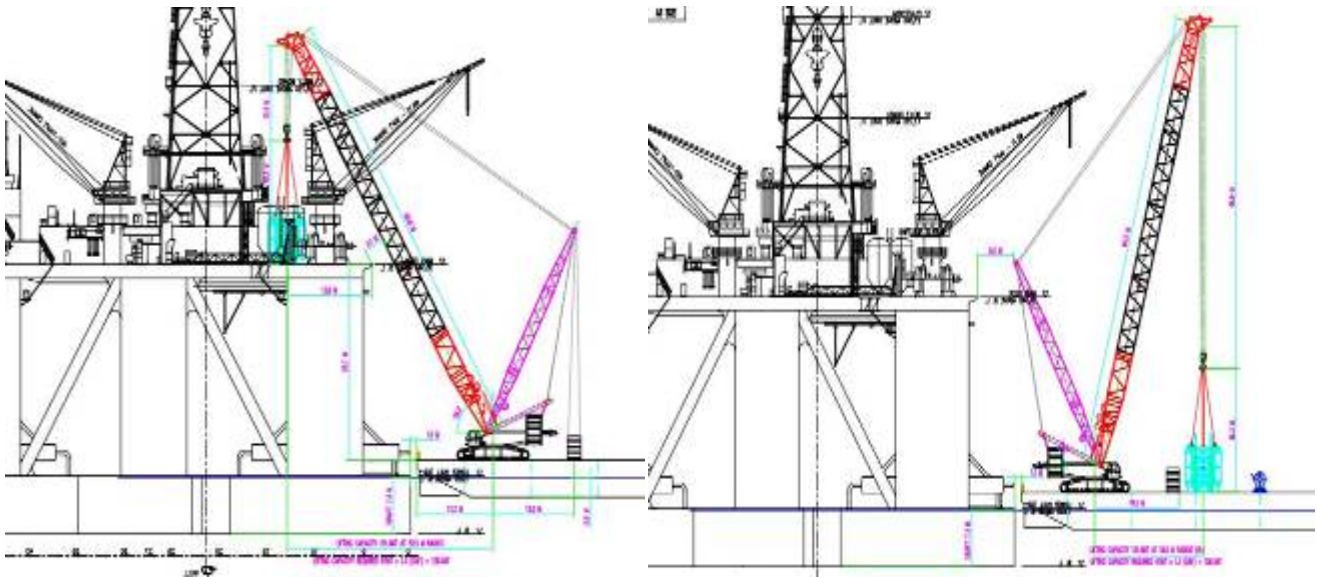
Kim Heng Crane Barge Alongside



Lifting of Damaged Riser Gantry Crane onto Barge

Heavy Lift of LMRP and BOP Assembly Semi-Submersible Transocean “Actinia”

Kim Heng was engaged by Transocean to provide Engineering solutions for provision of “Kim Heng 55” crane barge to do the heavy lifting of LMRP and BOP Assembly.



Lifting Layout Plan



Kim Heng 55 Crane Barge Lifting of LMRP & BOP Assembly from Rig

Upslip Repair and Maintenance Suction Hopper Barge “River Bee”

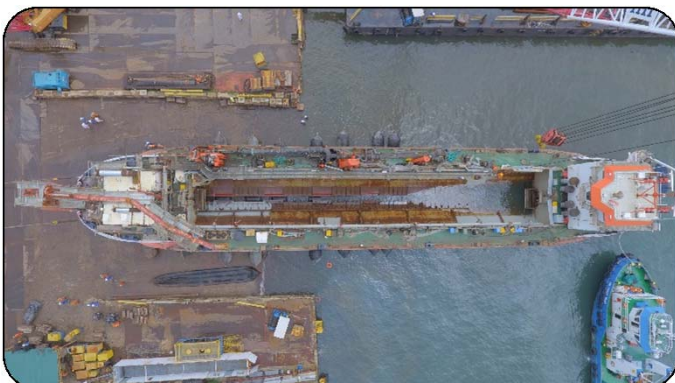
In 2017, Kim Heng Marine & Oilfield was contracted to carry out her Special Periodic Survey for TAMS Suction Hopper Dredger Barge “River Bee”.

- Kim Heng provided the full spectrum of services:
 - Full project management from upslipping to delivery.
 - Side shell repairs and Bottom plate replacement
 - Tank cleaning and sludge disposal
 - Inspection, blasting, refurbishment and painting works.

Before



After



Fabrication, Installation & Load Testing of Tension Deck & CTU Jackup Rig “Noble Tom Prosser”

NEW BUILT & RETROFIT

MARINE SUPPORT SERVICES

OFFSHORE SUPPORT SERVICES

HEAVY LIFT OPERATIONS

ENGINEERING SERVICES



Fabrication of Tension Deck & Heavy Duty Padeye



Assembly of Tension Deck



Tension Deck Painting



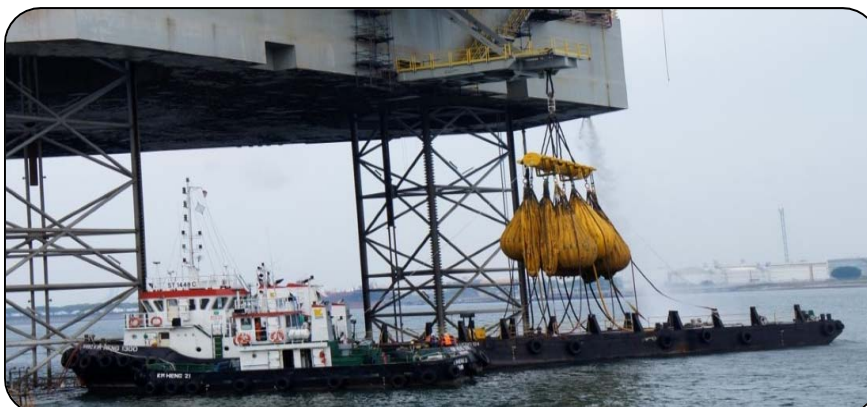
Tension Deck Arm Installation and Trial Function Test



Transportation to Rig



Installation In Progress



Water Bag Load
Testing In Progress

Modification & Weight Reduction of DES Package Tender Rig “SKD T-9”

SapuraKencana Drilling had awarded the Removal, Modification and Re-Installation of DES Package for SKD T-9 to Kim Heng Marine & Oilfield Pte Ltd.

Scope Performed:

- i) DES Package Weight Reduction
 - Off Driller Cantilever Modifications
 - Driller Cantilever Modifications
 - Master Skid Modifications
 - Rig Floor Modifications
- ii) Fabrication & Installation of Deep Well Pump Piping
- iii) Design, Fabrication & Installation of New VSAT Platforms I.W.O Helideck.
- iv) Removal of Baker Hughes Cementing Unit
- v) Installation of Schlumberger Cementing Unit with Piping



Reactivation & Commissioning of Rig Jackup Rig “Randolph Yost”

Kim Heng Marine & Oilfield secured a contract with Shelf Drilling International; to berth the newly re-activated Jackup Rig –Randolph Yost at its waterfront yard on the 29th Jan 2013 and complete all outstanding servicing, maintenance and installation job before the rig depart for the next drilling contract in early April.

The shipyard completed the following major jobs during the stay in Kim Heng:

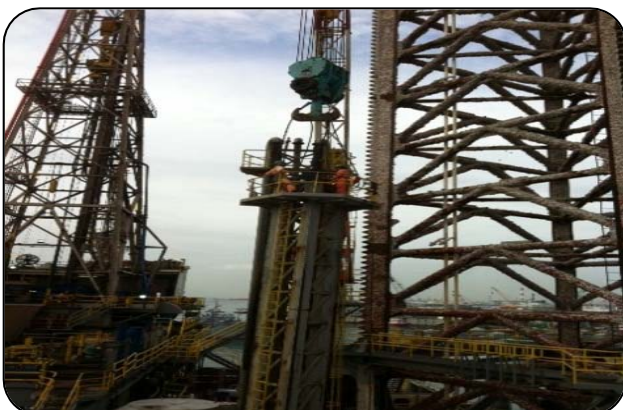
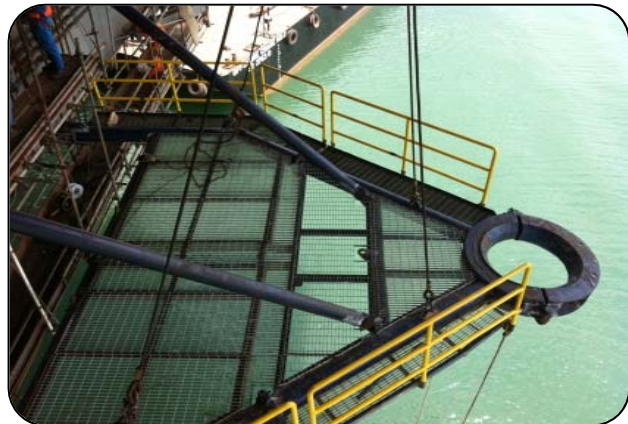
- Conductor Tensioning System
- Ballast tank cleaning and painting

Commissioning of:

- Annulus Flooding System
- 13-5/8” U Ram BOP commissioning
- Diverter and panel commissioning
- Choke and kill manifold commissioning
- Koomey unit commissioning

Servicing and commissioning of:

- BOP Hoist
- Rig Floor Tuggers
- Casing Stabbing board



Fabrication of Columns Semi-Submersible Ensco 8500 series

Due to its track record of timely delivery, Kim Heng Shipbuilding and Engineering Pte Ltd was contracted to fabricate the columns for Ensco 8500 series of Semi-sub built by Keppel FELS in 2006

The construction was carried out at Kim Heng Shipyard; No.9 Pandan Crescent which has an estimated land area of 34 125 sq-meter with a water front of 137 meter.



Fabrication of Drill Floor Jackup Rig “West Prospero”

The timely delivery of the drill-floor structure has again demonstrated Kim Heng’s capability to complete all the project on time, on requirement for the customer.



Fabrication of Structure Pipe Laying Vessel “Saipem Castorone”

NEW BUILT & RETROFIT

MARINE SUPPORT SERVICES

OFFSHORE SUPPORT SERVICES

HEAVY LIFT OPERATIONS

ENGINEERING SERVICES



Crane Boom Repair for Offshore Rigs

NEW BUILT & RETROFIT

MARINE SUPPORT SERVICES

OFFSHORE SUPPORT SERVICES

HEAVY LIFT OPERATIONS

ENGINEERING SERVICES



Inspection upon Arrival



Assessment of Damages after Sandblasting



Hot-work Repairs



Completion & Delivery

Fabrication of BIHS Mockup Structure Saipem Liwan Project

NEW BUILT & RETROFIT

MARINE SUPPORT SERVICES

OFFSHORE SUPPORT SERVICES

HEAVY LIFT OPERATIONS

ENGINEERING SERVICES



Production
Kick-Off



Assembly
&
Outfitting



Owner Inspection,
NDT Inspection,
Structure Weighing.
Completion and
Delivery



CONTACT DETAILS

Key Executives

Mr. Thomas Tan

Chief Executive Officer

Email: thomas.tan@kimheng.com.sg

Mobile: +65 9819 2225

Ms. Lilian Yeo

Chief Operating Officer

Email: liliany@kimheng.com.sg

Mobile: +65 9670 8120

Mr. Melvin Tan

Executive Director

Email: melvin.tan@kimheng.com.sg

Mobile: +65 9671 8123

Mr. Justin Tan

General Manager

Email: justin.tan@kimheng.com.sg

Mobile: +65 9670 0526

Mr. Heng Aik Soon

Head of Shipyard

Email: heng@kimheng.com.sg

Mobile: +65 8288 9711

Address



Corporate Office: No. 48 Penjuru Road, #04-00 Singapore 609152

Tel: +65 6777 9990 Fax: +65 6778 9990



Penjuru Yard: No. 48 Penjuru Road, Singapore 609152

Tel: +65 6777 9990 Fax: +65 6778 9990



Pandan Yard: No. 9 Pandan Crescent, Singapore 128465

Tel: +65 6777 9990 Fax: +65 6778 9990



www.kimheng.com.sg



enquiry@kimheng.com.sg



www.facebook.com/kimhengmarine



www.linkedin.com/company/kim-heng-marine-&-oilfield-pte-ltd