

KIM HENG **HEAVY EQUIPMENT PTE LTD**

(A Subsidiary of Kim Heng Marine & Oilfield Pte Ltd)

9 Pandan Crescent, Singapore 128465

Tel: +65 6777 9990 / +65 6773 9610 / Fax: +65 6778 9990 / +65 6779 0552

Website: www.kimheng.com.sg / Email: enquiry@kimheng.com.sg



Dec '17

CRANE FLEET PROFILE

List of Cranes

Fleet of Cranes maintained as at Sept 2015

Crawler Cranes (250 ~ 550 MT)					
S/N	Year of Manufacture	Brand Name	Model	Origin	Capacity
1	2005	Hitachi Sumitomo	SCX-2500-2	Japan	250 MT
2	2007	Hitachi Sumitomo	SCX-2800-2	Japan	275 MT
3	2007	Hitachi Sumitomo	SCX-2800-2	Japan	275 MT
4	2007	Hitachi Sumitomo	SCX-2800-2	Japan	275 MT
5	2008	Hitachi Sumitomo	SCX-2800-2	Japan	275 MT
6	2008	Hitachi Sumitomo	SCX-2800-2	Japan	275 MT
7	2007	IHI	CCH-2800	Japan	280 MT
8	2007	IHI	CCH-2800	Japan	280 MT
9	2007	IHI	CCH-2800	Japan	280 MT
10	2007	IHI	CCH-2800	Japan	280 MT
11	2008	IHI	CCH-2800	Japan	280 MT
12	2009	Kobelco	SL6000	Japan	550 MT

Particulars given herein are entirely without warranty as to correctness, interested parties must satisfy themselves by inspection or other means.

List of Cranes

Fleet of Cranes maintained as at Sept 2015

Crawler Cranes (50 ~120 MT)					
S/N	Year of Manufacture	Brand Name	Model	Origin	Capacity
13	2009	Sany	SCC500E	China	50 MT
14	2009	Sany	SCC500E	China	50 MT
15	2009	Sany	SCC500C	China	50 MT
16	2012	Sany	SCC550	China	55 MT
17	2010	Sany	SCC800C	China	80 MT
18	2010	Kobelco	CKE800-1F	Japan	80 MT
19	2010	Kobelco	CKE800-1F	Japan	80 MT
20	2004	Kobelco	BM700HD	Japan	65 MT
21	1998	Kobelco	FS90	Japan	90 MT
22	2003	Kobelco	7080-2	Japan	90 MT
23	2004	Kobelco	7080-2	Japan	80 MT
24	2014	Kobelco	7090G	Japan	90 MT
25	2013	Kobelco	7090G	Japan	90 MT
26	2015	Hitachi Sumitomo	SCX 1000A-3	Japan	100 MT
27	2013	Kobelco	7120S	Japan	120 MT
28	2013	Kobelco	7120S	Japan	120 MT

Particulars given herein are entirely without warranty as to correctness, interested parties must satisfy themselves by inspection or other means.

KHHE 01

HITACHI SUMITOMO SCX2500-2 250T Hydraulic Crawler Crane



General Particulars :

Model / Make	HITACHI SUMITOMO SCX2500-2	Year Built	2005
Max Lifting Cap.	250 MT	Origin	JAPAN
Hydraulic Model	KAWASAKI	Engine Model	MITSUBISHI

Operating Condition of Fixed Jib

Max Boom + Fixed Jib Length:	60.95M + 24.40M
Fixed Jib Angle:	10 or 30 degrees
Max Working Height:	80 M
Max Working Radius:	80 M

Operating Condition of Tower Jib

Max Boom + Tower Jib Length:	N.A
Tower Jib Working Angle:	N.A
Max Rated Lifting Moment:	N.A
Tower Specification Weight:	N.A

Operating Dimensions :

Length:	10523 mm	Width:	7520 mm
Swing Radius :	6000 mm	Weight:	203 ton

Operating Condition of Boom :

Boom Length:	15.25 – 60.95 m
Boom Working Angle:	30 – 80 degrees
Max Rated Lifting Moment:	250 T X 4.6M

Lifting Hooks :

145T, 80T, 35T, 13.5T

KHHE 02

HITACHI SUMITOMO SCX2800-2 275T Hydraulic Crawler Crane



General Particulars :

Model / Make	HITACHI SUMITOMO SCX2800-2	Year Built	2007
Max Lifting Cap.	275 MT	Origin	JAPAN
Hydraulic Model	KAWASAKI	Engine Model	MITSUBISHI

Operating Condition of Fixed Jib

Max Boom + Fixed Jib Length:	70.10M + 24.40M
Fixed Jib Angle:	10 or 30 degrees
Max Working Height:	90 M
Max Working Radius:	96 M

Operating Condition of Tower Jib

Max Boom + Tower Jib Length:	N.A
Tower Jib Working Angle:	N.A
Max Rated Lifting Moment:	N.A
Tower Specification Weight:	N.A

Operating Dimensions :

Length:	10523 mm	Width:	7520 mm
Swing Radius :	6000 mm	Weight:	223 ton

Operating Condition of Boom :

Boom Length:	15.25 – 91.45 m
Boom Working Angle:	30 – 80 degrees
Max Rated Lifting Moment:	275 T X 4.3M

Lifting Hooks :

275T, 145T, 80T, 35T, 13.5T

KHHE 03

HITACHI SUMITOMO SCX2800-2 275T Hydraulic Crawler Crane



General Particulars :

Model / Make	HITACHI SUMITOMO SCX2800-2	Year Built	2007
Max Lifting Cap.	275 MT	Origin	JAPAN
Hydraulic Model	KAWASAKI	Engine Model	MITSUBISHI

Operating Condition of Fixed Jib

Max Boom + Fixed Jib Length:	70.10M + 24.40M
Fixed Jib Angle:	10 or 30 degrees
Max Working Height:	90 M
Max Working Radius:	96 M

Operating Condition of Tower Jib

Max Boom + Tower Jib Length:	N.A
Tower Jib Working Angle:	N.A
Max Rated Lifting Moment:	N.A
Tower Specification Weight:	N.A

Operating Dimensions :

Length:	10523 mm	Width:	7520 mm
Swing Radius :	6000 mm	Weight:	223 ton

Operating Condition of Boom :

Boom Length:	15.25 – 91.45 m
Boom Working Angle:	30 – 80 degrees
Max Rated Lifting Moment:	275 T X 4.3M

Lifting Hooks :

275T, 145T, 80T, 35T, 13.5T

KHHE 04

HITACHI SUMITOMO SCX2800-2 275T Hydraulic Crawler Crane



General Particulars :

Model / Make	HITACHI SUMITOMO SCX2800-2	Year Built	2007
Max Lifting Cap.	275 MT	Origin	JAPAN
Hydraulic Model	KAWASAKI	Engine Model	mitsubishi

Operating Condition of Fixed Jib

Max Boom + Fixed Jib Length:	70.10M + 24.40M
Fixed Jib Angle:	10 or 30 degrees
Max Working Height:	90 M
Max Working Radius:	96 M

Operating Condition of Tower Jib

Max Boom + Tower Jib Length:	N.A
Tower Jib Working Angle:	N.A
Max Rated Lifting Moment:	N.A
Tower Specification Weight:	N.A

Operating Dimensions :

Length:	10523 mm	Width:	7520 mm
Swing Radius :	6000 mm	Weight:	223 ton

Operating Condition of Boom :

Boom Length:	15.25 – 91.45 m
Boom Working Angle:	30 – 80 degrees
Max Rated Lifting Moment:	275 T X 4.3M

Lifting Hooks :

275T, 145T, 80T, 35T, 13.5T

KHHE 05

HITACHI SUMITOMO SCX2800-2 275T Hydraulic Crawler Crane



General Particulars :

Model / Make	HITACHI SUMITOMO SCX2800-2	Year Built	2008
Max Lifting Cap.	275 MT	Origin	JAPAN
Hydraulic Model	KAWASAKI	Engine Model	MITSUBISHI

Operating Condition of Fixed Jib

Max Boom + Fixed Jib Length:	70.10M + 24.40M
Fixed Jib Angle:	10 or 30 degrees
Max Working Height:	90 M
Max Working Radius:	96 M

Operating Condition of Tower Jib

Max Boom + Tower Jib Length:	N.A
Tower Jib Working Angle:	N.A
Max Rated Lifting Moment:	N.A
Tower Specification Weight:	N.A

Operating Dimensions :

Length:	10523 mm	Width:	7520 mm
Swing Radius :	6000 mm	Weight:	223 ton

Operating Condition of Boom :

Boom Length:	15.25 – 91.45 m
Boom Working Angle:	30 – 80 degrees
Max Rated Lifting Moment:	275 T X 4.3M

Lifting Hooks :

275T, 145T, 80T, 35T, 13.5T

KHHE 06

HITACHI SUMITOMO SCX2800-2 275T Hydraulic Crawler Crane



General Particulars :

Model / Make	HITACHI SUMITOMO SCX2800-2	Year Built	2008
Max Lifting Cap.	275 MT	Origin	JAPAN
Hydraulic Model	KAWASAKI	Engine Model	MITSUBISHI

Operating Condition of Fixed Jib

Max Boom + Fixed Jib Length:	70.10M + 24.40M
Fixed Jib Angle:	10 or 30 degrees
Max Working Height:	90 M
Max Working Radius:	96 M

Operating Condition of Tower Jib

Max Boom + Tower Jib Length:	N.A
Tower Jib Working Angle:	N.A
Max Rated Lifting Moment:	N.A
Tower Specification Weight:	N.A

Operating Dimensions :

Length:	10523 mm	Width:	7520 mm
Swing Radius :	6000 mm	Weight:	223 ton

Operating Condition of Boom :

Boom Length:	15.25 – 91.45 m
Boom Working Angle:	30 – 80 degrees
Max Rated Lifting Moment:	275 T X 4.3M

Lifting Hooks :

275T, 145T, 80T, 35T, 13.5T

KHHE 09

IHI CCH 2800-5 280T Hydraulic Crawler Crane



General Particulars :

Model / Make	IHI CCH 2800-5	Year Built	2007
Max Lifting Cap.	280 MT	Origin	JAPAN
Hydraulic Model	KAWASAKI	Engine Model	CUMMINS

Operating Condition of Fixed Jib

Max Boom + Fixed Jib Length:	N.A
Fixed Jib Angle:	N.A
Max Working Height:	N.A
Max Working Radius:	N.A

Operating Condition of Tower Jib

Max Boom + Tower Jib Length:	N.A
Tower Jib Working Angle:	N.A
Max Rated Lifting Moment:	N.A
Tower Specification Weight:	N.A

Operating Dimensions :

Length:	10590 mm	Width:	7620 mm
Swing Radius :	6000 mm	Weight:	210 ton

Operating Condition of Boom :

Boom Length:	18.0 – 90.0 m
Boom Working Angle:	30 – 80 degrees
Max Rated Lifting Moment:	280 T X 5.0M

Lifting Hooks :

150T, 60T, 13.5T

KHHE 10

IHI CCH 2800-5 280T Hydraulic Crawler Crane



General Particulars :

Model / Make	IHI CCH 2800-5	Year Built	2007
Max Lifting Cap.	280 MT	Origin	JAPAN
Hydraulic Model	KAWASAKI	Engine Model	CUMMINS

Operating Condition of Fixed Jib

Max Boom + Fixed Jib Length:	N.A
Fixed Jib Angle:	N.A
Max Working Height:	N.A
Max Working Radius:	N.A

Operating Condition of Tower Jib

Max Boom + Tower Jib Length:	N.A
Tower Jib Working Angle:	N.A
Max Rated Lifting Moment:	N.A
Tower Specification Weight:	N.A

Operating Dimensions :

Length:	10590 mm	Width:	7620 mm
Swing Radius :	6000 mm	Weight:	210 ton

Operating Condition of Boom :

Boom Length:	18.0 – 90.0 m
Boom Working Angle:	30 – 80 degrees
Max Rated Lifting Moment:	280 T X 5.0M

Lifting Hooks :

150T, 60T, 13.5T

KHHE 11

IHI CCH 2800-5 280T Hydraulic Crawler Crane



General Particulars :			
Model / Make	IHI CCH 2800-5	Year Built	2007
Max Lifting Cap.	280 MT	Origin	JAPAN
Hydraulic Model	KAWASAKI	Engine Model	CUMMINS

Operating Condition of Fixed Jib	
Max Boom + Fixed Jib Length:	N.A
Fixed Jib Angle:	N.A
Max Working Height:	N.A
Max Working Radius:	N.A

Operating Condition of Tower Jib	
Max Boom + Tower Jib Length:	N.A
Tower Jib Working Angle:	N.A
Max Rated Lifting Moment:	N.A
Tower Specification Weight:	N.A

Operating Dimensions :			
Length:	10590 mm	Width:	7620 mm
Swing Radius :	6000 mm	Weight:	210 ton

Operating Condition of Boom :	
Boom Length:	18.0 – 90.0 m
Boom Working Angle:	30 – 80 degrees
Max Rated Lifting Moment:	280 T X 5.0M

Lifting Hooks :
150T, 60T, 13.5T

KHHE 12

IHI CCH 2800-5 280T Hydraulic Crawler Crane



General Particulars :

Model / Make	IHI CCH 2800-5	Year Built	2007
Max Lifting Cap.	280 MT	Origin	JAPAN
Hydraulic Model	KAWASAKI	Engine Model	CUMMINS

Operating Condition of Fixed Jib

Max Boom + Fixed Jib Length:	N.A
Fixed Jib Angle:	N.A
Max Working Height:	N.A
Max Working Radius:	N.A

Operating Condition of Tower Jib

Max Boom + Tower Jib Length:	N.A
Tower Jib Working Angle:	N.A
Max Rated Lifting Moment:	N.A
Tower Specification Weight:	N.A

Operating Dimensions :

Length:	10590 mm	Width:	7620 mm
Swing Radius :	6000 mm	Weight:	210 ton

Operating Condition of Boom :

Boom Length:	18.0 – 90.0 m
Boom Working Angle:	30 – 80 degrees
Max Rated Lifting Moment:	280 T X 5.0M

Lifting Hooks :

150T, 60T, 13.5T

KHHE 13

IHI CCH 2800-5 280T Hydraulic Crawler Crane



General Particulars :

Model / Make	IHI CCH 2800-5	Year Built	2008
Max Lifting Cap.	280 MT	Origin	JAPAN
Hydraulic Model	KAWASAKI	Engine Model	CUMMINS

Operating Condition of Fixed Jib

Max Boom + Fixed Jib Length:	N.A
Fixed Jib Angle:	N.A
Max Working Height:	N.A
Max Working Radius:	N.A

Operating Condition of Tower Jib

Max Boom + Tower Jib Length:	N.A
Tower Jib Working Angle:	N.A
Max Rated Lifting Moment:	N.A
Tower Specification Weight:	N.A

Operating Dimensions :

Length:	10590 mm	Width:	7620 mm
Swing Radius :	6000 mm	Weight:	210 ton

Operating Condition of Boom :

Boom Length:	18.0 – 90.0 m
Boom Working Angle:	30 – 80 degrees
Max Rated Lifting Moment:	280 T X 5.0M

Lifting Hooks :

150T, 60T, 13.5T

KHHE 14

KOBELCO SL6000

550T Hydraulic Crawler Crane



General Particulars :

Model / Make	KOBELCO SL6000	Year Built	2009
Max Lifting Cap.	550 MT	Origin	JAPAN
Hydraulic Model	KAWASAKI	Engine Model	HINO

Operating Condition of Luffing Jib

Max Boom + Tower Jib Length:	60.0M X 72.0M
Boom Working Angle:	66 – 86 degrees
Max Rated Lifting Moment:	184.0T X 14.0M
Tower Specification Weight:	130.0 ton

Operating Condition of Luffing Jib SHL

Max Boom + Tower Jib Length:	84.0M X 84.0M
Boom Working Angle:	66 – 86 degrees
Max Rated Lifting Moment:	200.0T X 14.4M
Tower Specification Weight:	130.0 ton

Operating Dimensions :

Length:	8395 mm	Width:	9900 mm
Swing Radius :	8300 mm	Weight:	120.0 ton

Operating Condition of Boom :

Boom Length:	30 – 84 m
Boom Working Angle:	30 – 80 degrees
Max Rated Lifting Moment:	300 T X 9.0M

Operating Condition of Boom SHL:

Boom Length:	30 – 84 m
Boom Working Angle:	40 – 80 degrees
Max Rated Lifting Moment:	300 T X 20.0M

Lifting Hooks :

300T, 120T, 70T, 40T, 14T

KHHE 15

SANY SCC500E

50T Hydraulic Crawler Crane



General Particulars :

Model / Make	SANY SCC500E	Year Built	2009
Max Lifting Cap.	50 MT	Origin	CHINA
Hydraulic Model	BOSCH REXROTH	Engine Model	CUMMINS

Operating Condition of Fixed Jib

Max Boom + Fixed Jib Length:	43M +15.25M
Fixed Jib Angle:	10 or 30 degrees
Max Working Height:	55 M
Max Working Radius:	34 M

Operating Condition of Tower Jib

Max Boom + Tower Jib Length:	N.A
Tower Jib Working Angle:	N.A
Max Rated Lifting Moment:	N.A
Tower Specification Weight:	N.A

Operating Dimensions :

Length:	6910 mm	Width:	4510 mm
Swing Radius :	4050 mm	Weight:	49 ton

Operating Condition of Boom :

Boom Length:	13 – 52 m
Boom Working Angle:	30 – 80 degrees
Max Rated Lifting Moment:	50 T X 3.7M

Lifting Hooks :

30T, 15T, 6T

KHHE 16

SANY SCC500E 50T Hydraulic Crawler Crane



General Particulars :

Model / Make	SANY SCC500E	Year Built	2009
Max Lifting Cap.	50 MT	Origin	CHINA
Hydraulic Model	BOSCH REXROTH	Engine Model	CUMMINS

Operating Condition of Fixed Jib

Max Boom + Fixed Jib Length:	43M +15.25M
Fixed Jib Angle:	10 or 30 degrees
Max Working Height:	55 M
Max Working Radius:	34 M

Operating Condition of Tower Jib

Max Boom + Tower Jib Length:	N.A
Tower Jib Working Angle:	N.A
Max Rated Lifting Moment:	N.A
Tower Specification Weight:	N.A

Operating Dimensions :

Length:	6910 mm	Width:	4510 mm
Swing Radius :	4050 mm	Weight:	49 ton

Operating Condition of Boom :

Boom Length:	13 – 52 m
Boom Working Angle:	30 – 80 degrees
Max Rated Lifting Moment:	50 T X 3.7M

Lifting Hooks :

30T, 15T, 6T

KHHE 17

SANY SCC500C

50T Hydraulic Crawler Crane



General Particulars :			
Model / Make	SANY SCC500C	Year Built	2009
Max Lifting Cap.	50 MT	Origin	CHINA
Hydraulic Model	BOSCH REXROTH	Engine Model	CUMMINS

Operating Condition of Fixed Jib	
Max Boom + Fixed Jib Length:	43M +15.25M
Fixed Jib Angle:	10 or 30 degrees
Max Working Height:	55 M
Max Working Radius:	34 M

Operating Condition of Tower Jib	
Max Boom + Tower Jib Length:	N.A
Tower Jib Working Angle:	N.A
Max Rated Lifting Moment:	N.A
Tower Specification Weight:	N.A

Operating Dimensions :			
Length:	6910 mm	Width:	4510 mm
Swing Radius :	4050 mm	Weight:	49 ton

Operating Condition of Boom :	
Boom Length:	13 – 52 m
Boom Working Angle:	30 – 80 degrees
Max Rated Lifting Moment:	50 T X 3.7M

Lifting Hooks :
30T, 15T, 6T

KHHE 18

SANY SCC550 55T Hydraulic Crawler Crane



General Particulars :

Model / Make	SANY SCC550	Year Built	2012
Max Lifting Cap.	55 MT	Origin	CHINA
Hydraulic Model	KAWASAKI	Engine Model	ISUZU

Operating Condition of Fixed Jib

Max Boom + Fixed Jib Length:	43M +15.25M
Fixed Jib Angle:	10 or 30 degrees
Max Working Height:	55 M
Max Working Radius:	34 M

Operating Condition of Tower Jib

Max Boom + Tower Jib Length:	N.A
Tower Jib Working Angle:	N.A
Max Rated Lifting Moment:	N.A
Tower Specification Weight:	N.A

Operating Dimensions :

Length:	6910 mm	Width:	4510 mm
Swing Radius :	4050 mm	Weight:	49 ton

Operating Condition of Boom :

Boom Length:	13 – 52 m
Boom Working Angle:	30 – 80 degrees
Max Rated Lifting Moment:	55 T X 3.0M

Lifting Hooks :

30T, 15T, 6T

KHHE 19

SANY SCC800C 80T Hydraulic Crawler Crane



General Particulars :

Model / Make	SANY SCC800C	Year Built	2009
Max Lifting Cap.	50 MT	Origin	CHINA
Hydraulic Model	BOSCH REXROTH	Engine Model	CUMMINS

Operating Condition of Fixed Jib

Max Boom + Fixed Jib Length:	49M +18M
Fixed Jib Angle:	15 or 30 degrees
Max Working Height:	63 M
Max Working Radius:	38M

Operating Condition of Tower Jib

Max Boom + Tower Jib Length:	N.A
Tower Jib Working Angle:	N.A
Max Rated Lifting Moment:	N.A
Tower Specification Weight:	N.A

Operating Dimensions :

Length:	7590 mm	Width:	4900 mm
Swing Radius :	4440 mm	Weight:	79.5 ton

Operating Condition of Boom :

Boom Length:	13 – 49 m
Boom Working Angle:	30 – 80 degrees
Max Rated Lifting Moment:	80 T X 4.3M

Lifting Hooks :

50T, 25T, 9T

KHHE 20

KOBELCO CKE800-1F 80T Hydraulic Crawler Crane



General Particulars :

Model / Make	KOBELCO CKE800-1F	Year Built	2010
Max Lifting Cap.	80 MT	Origin	JAPAN
Hydraulic Model	KAWASAKI	Engine Model	HINO

Operating Condition of Fixed Jib

Max Boom + Fixed Jib Length:	42.7M +18M
Fixed Jib Angle:	10 or 30 degrees
Max Working Height:	58 M
Max Working Radius:	44M

Operating Condition of Tower Jib

Max Boom + Tower Jib Length:	N.A
Tower Jib Working Angle:	N.A
Max Rated Lifting Moment:	N.A
Tower Specification Weight:	N.A

Operating Dimensions :

Length:	7245 mm	Width:	4830 mm
Swing Radius :	4250 mm	Weight:	73.8 ton

Operating Condition of Boom :

Boom Length:	9.1 – 54.9 m
Boom Working Angle:	30 – 80 degrees
Max Rated Lifting Moment:	80 T X 3.0M

Lifting Hooks :

55T, 32T, 19T, 6.6T

KHHE 21

KOBELCO CKE800-1F 80T Hydraulic Crawler Crane



General Particulars :

Model / Make	KOBELCO CKE800-1F	Year Built	2010
Max Lifting Cap.	80 MT	Origin	JAPAN
Hydraulic Model	KAWASAKI	Engine Model	HINO

Operating Condition of Fixed Jib

Max Boom + Fixed Jib Length:	42.7M +18.3M
Fixed Jib Angle:	10 or 30 degrees
Max Working Height:	58 M
Max Working Radius:	44M

Operating Condition of Tower Jib

Max Boom + Tower Jib Length:	N.A
Tower Jib Working Angle:	N.A
Max Rated Lifting Moment:	N.A
Tower Specification Weight:	N.A

Operating Dimensions :

Length:	7245 mm	Width:	4830 mm
Swing Radius :	4250 mm	Weight:	73.8 ton

Operating Condition of Boom :

Boom Length:	9.1 – 54.9 m
Boom Working Angle:	30 – 80 degrees
Max Rated Lifting Moment:	80 T X 3.0M

Lifting Hooks :

55T, 32T, 19T, 6.6T

KHHE 23

KOBELCO BM700HD 65T Hydraulic Crawler Crane



General Particulars :

Model / Make	KOBELCO BM700HD	Year Built	2004
Max Lifting Cap.	65 MT	Origin	JAPAN
Hydraulic Model	KAWASAKI	Engine Model	MITSUBISHI

Operating Condition of Fixed Jib

Max Boom + Fixed Jib Length:	N.A.
Fixed Jib Angle:	N.A.
Max Working Height:	N.A.
Max Working Radius:	N.A.

Operating Condition of Tower Jib

Max Boom + Tower Jib Length:	42.7M X 30.5M
Tower Jib Working Angle:	60 – 90 degrees
Max Rated Lifting Moment:	13.0T X 10.0M
Tower Specification Weight:	79.0 ton

Operating Dimensions :

Length:	6930 mm	Width:	4830 mm
Swing Radius :	3990 mm	Weight:	79.0 ton

Operating Condition of Boom :

Boom Length:	N.A.
Boom Working Angle:	N.A.
Max Rated Lifting Moment:	N.A.

Lifting Hooks :

55T, 32T, 19T, 6.6T

KHHE 25

KOBELCO FS90 90T Hydraulic Crawler Crane



General Particulars :

Model / Make	KOBELCO FS90	Year Built	1998
Max Lifting Cap.	90 MT	Origin	JAPAN
Hydraulic Model	KAWASAKI	Engine Model	mitsubishi

Operating Condition of Fixed Jib

Max Boom + Fixed Jib Length:	51.8M +21.3M
Fixed Jib Angle:	10 or 30 degrees
Max Working Height:	70 M
Max Working Radius:	52M

Operating Condition of Tower Jib

Max Boom + Tower Jib Length:	44.2M X 35.1M
Tower Jib Working Angle:	60 – 90 degrees
Max Rated Lifting Moment:	15.0T X 14.0M
Tower Specification Weight:	93.5 ton

Operating Dimensions :

Length:	7558 mm	Width:	4900 mm
Swing Radius :	4400 mm	Weight:	84.8 ton

Operating Condition of Boom :

Boom Length:	12.2 – 57.9 m
Boom Working Angle:	30 – 80 degrees
Max Rated Lifting Moment:	90 T X 3.7M

Lifting Hooks :

80T, 50T, 30T, 11T

KHHE 26

KOBELCO 7080-2 90T Hydraulic Crawler Crane



General Particulars :

Model / Make	KOBELCO 7080-2	Year Built	2003
Max Lifting Cap.	90 MT	Origin	JAPAN
Hydraulic Model	KAWASAKI	Engine Model	MITSUBISHI

Operating Condition of Fixed Jib

Max Boom + Fixed Jib Length:	51.8M +21.3M
Fixed Jib Angle:	10 or 30 degrees
Max Working Height:	70 M
Max Working Radius:	52M

Operating Condition of Tower Jib

Max Boom + Tower Jib Length:	44.2M X 35.1M
Tower Jib Working Angle:	60 – 90 degrees
Max Rated Lifting Moment:	15.0T X 14.0M
Tower Specification Weight:	93.5 ton

Operating Dimensions :

Length:	7558 mm	Width:	4900 mm
Swing Radius :	4400 mm	Weight:	84.8 ton

Operating Condition of Boom :

Boom Length:	12.2 – 57.9 m
Boom Working Angle:	30 – 80 degrees
Max Rated Lifting Moment:	90 T X 3.7M

Lifting Hooks :

80T, 50T, 30T, 11T

KHHE 27

KOBELCO 7080-2 90T Hydraulic Crawler Crane



General Particulars :

Model / Make	KOBELCO 7080-2	Year Built	2004
Max Lifting Cap.	90 MT	Origin	JAPAN
Hydraulic Model	KAWASAKI	Engine Model	MITSUBISHI

Operating Condition of Fixed Jib

Max Boom + Fixed Jib Length:	51.8M +21.3M
Fixed Jib Angle:	10 or 30 degrees
Max Working Height:	70 M
Max Working Radius:	52M

Operating Condition of Tower Jib

Max Boom + Tower Jib Length:	44.2M X 35.1M
Tower Jib Working Angle:	60 – 90 degrees
Max Rated Lifting Moment:	15.0T X 14.0M
Tower Specification Weight:	93.5 ton

Operating Dimensions :

Length:	7558 mm	Width:	4900 mm
Swing Radius :	4400 mm	Weight:	84.8 ton

Operating Condition of Boom :

Boom Length:	12.2 – 57.9 m
Boom Working Angle:	30 – 80 degrees
Max Rated Lifting Moment:	90 T X 3.7M

Lifting Hooks :

80T, 50T, 30T, 11T

KHHE 28

KOBELCO 7090G 90T Hydraulic Crawler Crane



General Particulars :

Model / Make	KOBELCO 7090G	Year Built	2014
Max Lifting Cap.	90 MT	Origin	JAPAN
Hydraulic Model	KAWASAKI	Engine Model	HINO

Operating Dimensions :

Length:	7558 mm	Width:	4900 mm
Swing Radius :	4400 mm	Weight:	93.0 ton

Operating Condition of Fixed Jib

Max Boom + Fixed Jib Length:	53.4M +21.3M
Fixed Jib Angle:	10 or 30 degrees
Max Working Height:	72 M
Max Working Radius:	56M

Operating Condition of Boom :

Boom Length:	13.8 – 62.6 m
Boom Working Angle:	30 – 80 degrees
Max Rated Lifting Moment:	90 T X 4.3M

Operating Condition of Tower Jib

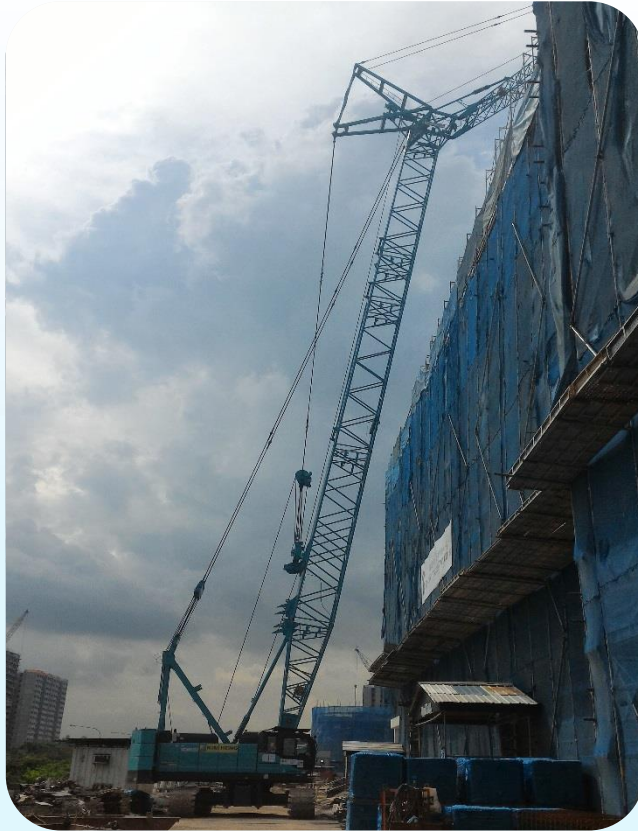
Max Boom + Tower Jib Length:	44.3M X 37.1M
Tower Jib Working Angle:	60 – 90 degrees
Max Rated Lifting Moment:	15.0T X 14.0M
Tower Specification Weight:	101.0 ton

Lifting Hooks :

50T, 30T, 11T

KHHE 29

KOBELCO 7090G 90T Hydraulic Crawler Crane



General Particulars :

Model / Make	KOBELCO 7090G	Year Built	2013
Max Lifting Cap.	90 MT	Origin	JAPAN
Hydraulic Model	KAWASAKI	Engine Model	HINO

Operating Condition of Fixed Jib

Max Boom + Fixed Jib Length:	53.4M +21.3M
Fixed Jib Angle:	10 or 30 degrees
Max Working Height:	72 M
Max Working Radius:	56M

Operating Condition of Tower Jib

Max Boom + Tower Jib Length:	44.3M X 37.1M
Tower Jib Working Angle:	60 – 90 degrees
Max Rated Lifting Moment:	15.0T X 14.0M
Tower Specification Weight:	101.0 ton

Operating Dimensions :

Length:	7558 mm	Width:	4900 mm
Swing Radius :	4400 mm	Weight:	93.0 ton

Operating Condition of Boom :

Boom Length:	13.8 – 62.6 m
Boom Working Angle:	30 – 80 degrees
Max Rated Lifting Moment:	90 T X 4.3M

Lifting Hooks :

50T, 30T, 11T

KHHE 30

HITACHI SUMITOMO SCX 1000A-3 100T Hydraulic Crawler Crane



General Particulars :

Model / Make	HITACHI SUMITOMO SCX1000A-3	Year Built	2015
Max Lifting Cap.	100 MT	Origin	JAPAN
Hydraulic Model	KAWASAKI	Engine Model	ISUZU

Operating Condition of Fixed Jib

Max Boom + Fixed Jib Length:	51.0M +28.0M
Fixed Jib Angle:	10 or 30 degrees
Max Working Height:	72 M
Max Working Radius:	58M

Operating Condition of Tower Jib

Max Boom + Tower Jib Length:	44.5M X 37.0M
Tower Jib Working Angle:	60 – 90 degrees
Max Rated Lifting Moment:	15.0T X 14.0M
Tower Specification Weight:	115.0 ton

Operating Dimensions :

Length:	7448 mm	Width:	4990 mm
Swing Radius :	4300 mm	Weight:	101.0 ton

Operating Condition of Boom :

Boom Length:	12.0 – 60.0 m
Boom Working Angle:	30 – 80 degrees
Max Rated Lifting Moment:	100 T X 3.8M

Lifting Hooks :

50T, 35T, 12T

KHHE 31

KOBELCO 7120S

120T Hydraulic Crawler Crane



General Particulars :

Model / Make	KOBELCO 7120S	Year Built	2013
Max Lifting Cap.	120 MT	Origin	JAPAN
Hydraulic Model	KAWASAKI	Engine Model	HINO

Operating Condition of Fixed Jib

Max Boom + Fixed Jib Length:	61.0M +30.5M
Fixed Jib Angle:	10 or 30 degrees
Max Working Height:	85M
Max Working Radius:	72M

Operating Condition of Tower Jib

Max Boom + Tower Jib Length:	51.7M X 44.2M
Tower Jib Working Angle:	60 – 90 degrees
Max Rated Lifting Moment:	20.0T X 15.0M
Tower Specification Weight:	130.0 ton

Operating Dimensions :

Length:	8395 mm	Width:	6310 mm
Swing Radius :	4950 mm	Weight:	120.0 ton

Operating Condition of Boom :

Boom Length:	15.2 – 61.0 m
Boom Working Angle:	30 – 80 degrees
Max Rated Lifting Moment:	120 T X 5.0M

Operating Condition of Long Boom :

Boom Length:	61.0 – 79.2 m
Boom Working Angle:	40 – 80 degrees
Max Rated Lifting Moment:	24 T X 16.0M

Lifting Hooks :

50T, 30T, 11T

KHHE 32

KOBELCO 7120S

120T Hydraulic Crawler Crane



General Particulars :

Model / Make	KOBELCO 7120S	Year Built	2013
Max Lifting Cap.	120 MT	Origin	JAPAN
Hydraulic Model	KAWASAKI	Engine Model	HINO

Operating Condition of Fixed Jib

Max Boom + Fixed Jib Length:	61.0M +30.5M
Fixed Jib Angle:	10 or 30 degrees
Max Working Height:	85M
Max Working Radius:	72M

Operating Condition of Tower Jib

Max Boom + Tower Jib Length:	51.7M X 44.2M
Tower Jib Working Angle:	60 – 90 degrees
Max Rated Lifting Moment:	20.0T X 15.0M
Tower Specification Weight:	130.0 ton

Operating Dimensions :

Length:	8395 mm	Width:	6310 mm
Swing Radius :	4950 mm	Weight:	120.0 ton

Operating Condition of Boom :

Boom Length:	15.2 – 61.0 m
Boom Working Angle:	30 – 80 degrees
Max Rated Lifting Moment:	120 T X 5.0M

Operating Condition of Long Boom :

Boom Length:	61.0 – 79.2 m
Boom Working Angle:	40 – 80 degrees
Max Rated Lifting Moment:	24 T X 16.0M

Lifting Hooks :

50T, 30T, 11T

This page has been intentionally left blank.



KIM HENG

HEAVY EQUIPMENT PTE LTD

CONTACT DETAILS

Key Executives

Mr. Thomas Tan

CEO

Email: thomas.tan@kimheng.com.sg

Mobile: +65 9819 2225

Ms. Lilian Yeo

COO

Email: liliany@kimheng.com.sg

Mobile: +65 9670 8120

Mr. Melvin Tan

Commercial / Operations Director

Email: melvin.tan@kimheng.com.sg

Mobile: +65 9671 8123

Mr. Andy Ong

Deputy Director – KHHE

Email: andy.ong@kimheng.com.sg

Mobile: +65 9688 9560

Mr. Edwin Lim

General Manager – KHHE

Email: alvin.seah@kimheng.com.sg

Mobile: +65 9657 9000

Address



Pandan Yard : No. 9 Pandan Crescent, Singapore 128465

Tel: +65 6773 9610 Fax: +65 6779 0552



Penjuru Yard : No. 48 Penjuru Road, Singapore 609152

Tel: +65 6777 9990 Fax: +65 6778 9990



www.kimheng.com.sg



enquiry@kimheng.com.sg



www.facebook.com/kimhengmarine



www.linkedin.com/company/kim-heng-marine-&-oilfield-pte-ltd